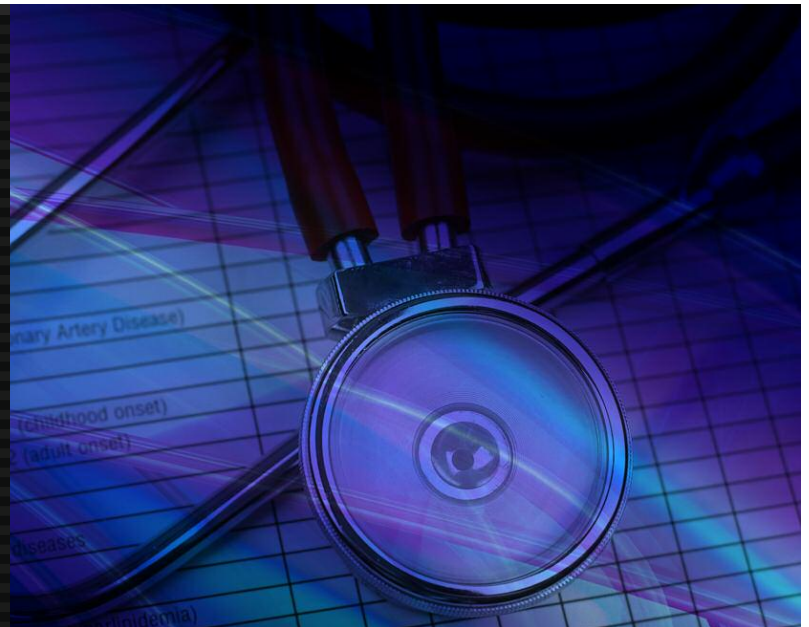


# LRS Enhances Printing Output for Epic and Enterprise Applications



## LRS provides a common output platform for Epic and enterprise applications

### Features that lower the cost of managing Epic application output:

- **Assured document delivery:** ties to the Epic status feedback mechanism for better, faster patient care with fewer help desk calls
- **Epic integration:** automatically converts Epic front-end documents to printer-ready format and provides print status feedback to Epic applications
- **Electronic forms support:** eliminates need for costly pre-printed forms and tamper-proof paper
- **Simple configuration:** browser-based access to printer configuration streamlines system administration
- **Multi-application support:** consolidates output from EPS servers, Windows print servers, and other distributed applications for a cost-effective central point of control

### Customer benefits:

- **Improved patient care:** fewer printing problems occur, which means faster delivery of critical healthcare documents
- **Better regulatory compliance:** secure document delivery features help with HIPAA and Meaningful Use requirements
- **Lower costs:** fewer printing problems means fewer costly help desk calls; electronic document delivery features help reduce total pages printed
- **Simplified IT landscape:** eliminating unnecessary/redundant print servers and special data stream cards can decrease both capital expenses and ongoing operational costs
- **Better uptime:** administrators can take nodes offline without impacting healthcare processes, and quickly create print queues to support new devices

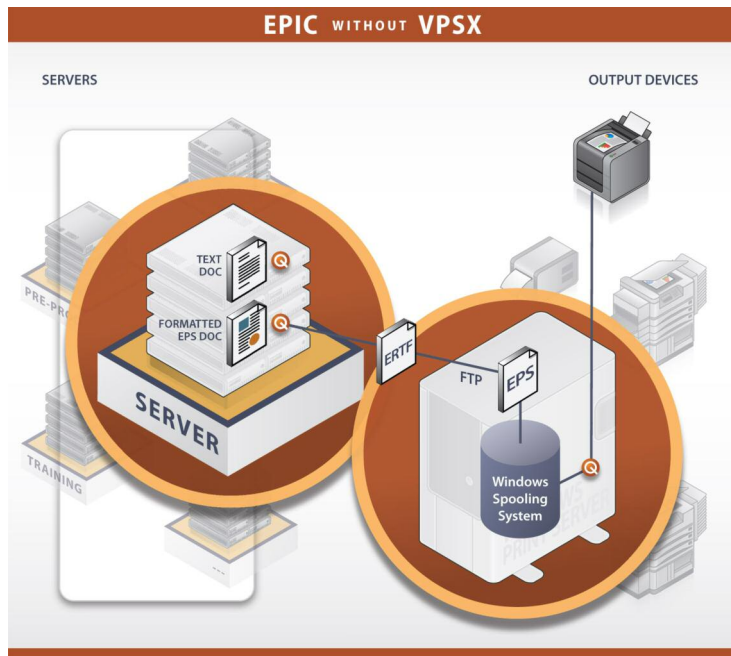
LRS® software promotes faster, better delivery of healthcare information and saves money. After interviewing a variety of LRS customers, analysts at IDC concluded: *"The three-year ROI analysis shows that on average, the companies in this study... saw a payback period of less than six months and an ROI of 310%."*\*

\* IDC White Paper sponsored by LRS, "Business Value of Output Management," IDC #226994, April 2011



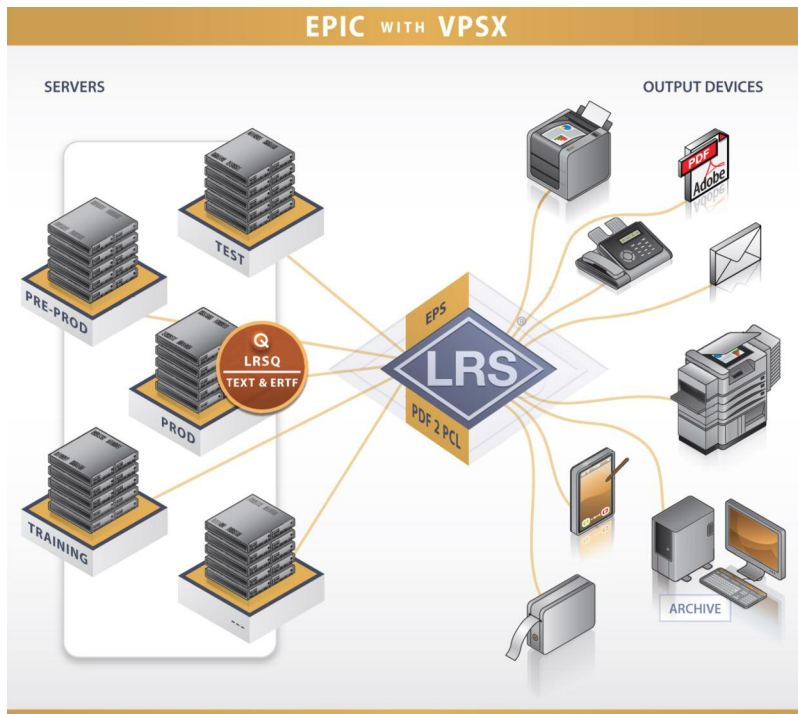
Levi, Ray & Shoup, Inc.

[www.vpsx.com](http://www.vpsx.com)



## Epic Before LRS Solution

- Multiple Operating System (OS) queues
- FTP required for EPS with no ability to track print job delivery
- Multiple printer definitions and points of failure
- Extensive OS printer administration
- Adding, moving, or changing printers requires hours/days plus UNIX and Windows administration effort



## Epic After LRS Solution

- Eliminate OS queues
- Eliminate FTP for EPS
- Consolidate EPS hardware
- Prevent hung Windows printing processes
- Control and monitor all printing in central location, or distribute control by user group
- Maintain EPS and Epic Server queues on same server
- Route output from Epic and enterprise applications to multiple devices, including mail servers and archiving solutions

## LRS Can Help—Let's Discuss Your Needs

Contact an LRS marketing representative at 217.793.3800 to discuss the specific details surrounding your environment, critical processes, and goals.

© Copyright 2012 Levi, Ray & Shoup, Inc. All rights reserved. LRS, LRS in the diamond device, and VPSX are registered trademarks of Levi, Ray & Shoup, Inc. Epic is a trademark of Epic Systems Corporation in the United States and/or in other countries. UNIX is a registered trademark of The Open Group in the United States and other countries. Windows is a registered trademark of Microsoft Corporation in the United States and/or other countries. The Adobe PDF logo is either a registered trademark or a trademark of Adobe Systems Incorporated in the United States and/or other countries.